




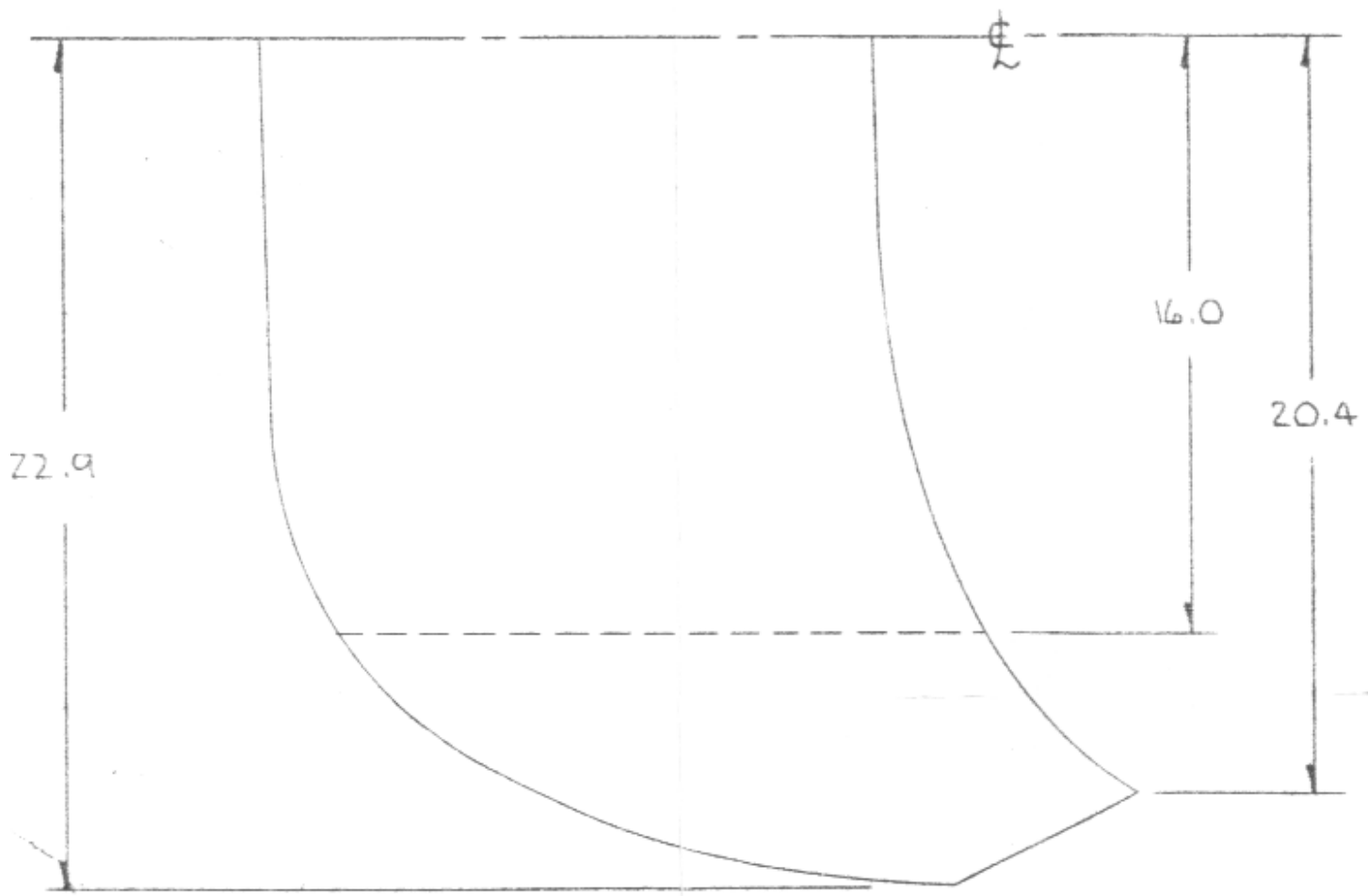
AERO PLASTICS INC.

Report No: CW-999CONRPT

Installation Drawing and Instructions

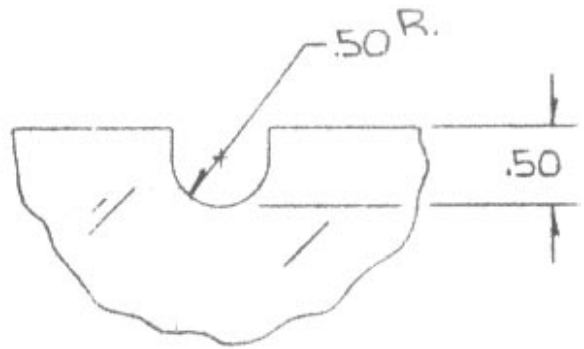
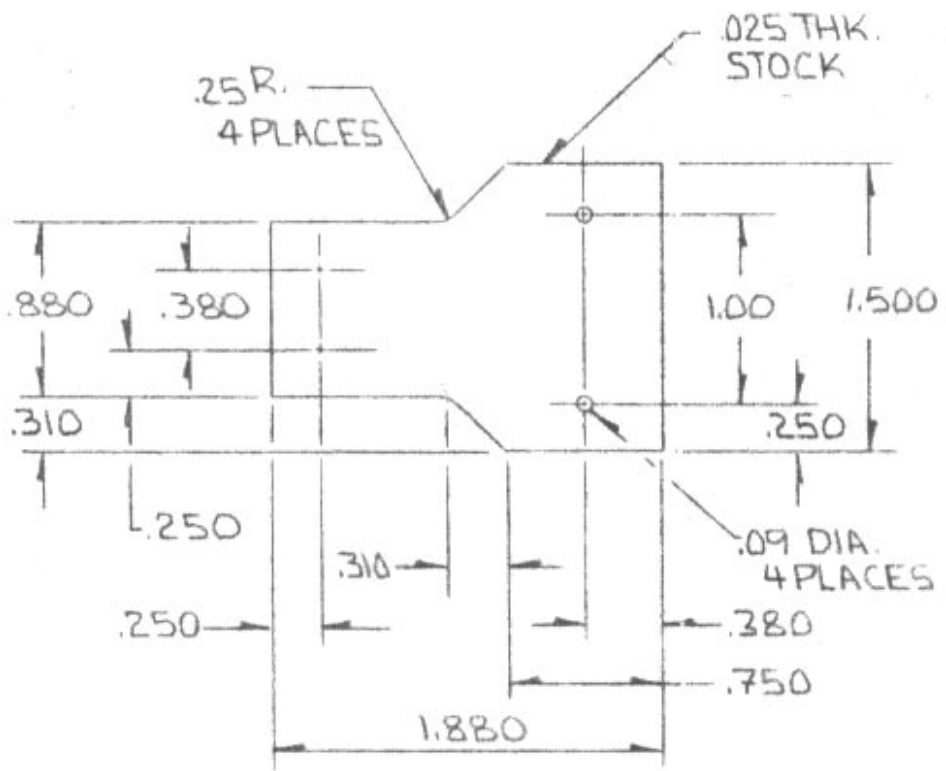
INSTALLATION INSTRUCTIONS
FOR
SINGLE PIECE WINDSHIELD

- A. REMOVAL OF EXISTING WIND SHIELD:
1. REMOVE COMPASS AND OUTSIDE AIR TEMPERATURE INDICATOR
 2. REMOVE CENTER POST OUTER RETAINER STRIP - LEAVE POST IN POSITION UNTIL WINDSHIELD IS REMOVED.
 3. REMOVE LOWER SILL OUTER RETAINER STRIP.
 4. REMOVE SIDE POST RETAINER STRIP AND SPRING CLIP BY DRILLING OUT ELEVEN (11) RIVETS PER SIDE
 5. REMOVE WINDSHIELD BY FORCING OUTWARD AT THE BOTTOM AND PULLING DOWNWARD TO CLEAR UPPER SILL SLOT.
- B. PREPERATION FOR SINGLE PIECE WINDSHIELD INSTALLATION:
1. COVER TOP OF INSTRUMENT GLARE SHIELD TO PREVENT FOREIGN MATERIAL FROM ENTERING INSTRUMENTS & RADIO EQUIPMENT.
 2. REMOVE CENTER POST & BRACKETS COMPLETELY OR AS SHOWN IN FIG. 1
 3. REMOVE OLD SEALANT AND CLEAN ALL SURFACES.
 4. CHECK MOUNTING SURFACES FOR ROUGH EDGES & PROTRUSIONS STRAIGHTEN & SMOOTH AS REQUIRED
- C. INSTALLATION OF SINGLE PIECE WINDSHIELD.
1. FIT ROUGH TRIMMED WINDSHIELD INTO POSITION
 2. MARK FOR FINAL TRIM & FOR NOTCHING OF UPPER EDGE FOR SCREW CLEARANCE (7 PLACES) TRIM & NOTCH BEVEL SIDES & BOTTOM EDGES TO FIT CONTOUR.
 3. PLACE PRODUCTS RESEARCH CORP PRC-1221 SEALANT OR EQUIV ON ALL MOUNTING SURFACES (APPROX .06 THICK.)
 4. FIT WINDSHEILD INTO POSITION
 5. RE-INSTALL LOWER SILL OUTER RETAINER STRIP USING GLAZING SEALANT & NOTED HARDWARE:
 6. RE-INSTALL SIDE POST OUTER STRIP & SPRING CLIP USING GLAZING SEALANT & NOTED HARDWARE. APPLY SCREWS IN DRILLED OUT RIVET HOLE SEE 
 7. REMOVE EXCESS SEALANT USING A DRY, CLEAN CLOTH
 8. CLEAN INTERIOR & EXTERIOR SURFACES OF WINDSHIELD WITH AN APPROVED PLASTIC CLEANER
- D. RELOCATE COMPASS & OUTSIDE AIR TEMP INDICATOR IN A SUITABLE PLACE.
1. OUTSIDE AIR TEMP INDICATOR REQUIRES A .375 DIA. HOLE:
 2. COMPASS MAY BE LOCATED AS SHOWN IN FIG. 1 OR IF AN ALTERNATE LOCATION IS SELECTED THE TRIM PLATE (5) SHOULD BE INSTALLED AT CENTER POST UPPER ATTACH POINT BY MATCH DRILLING & USING ITEM 8.

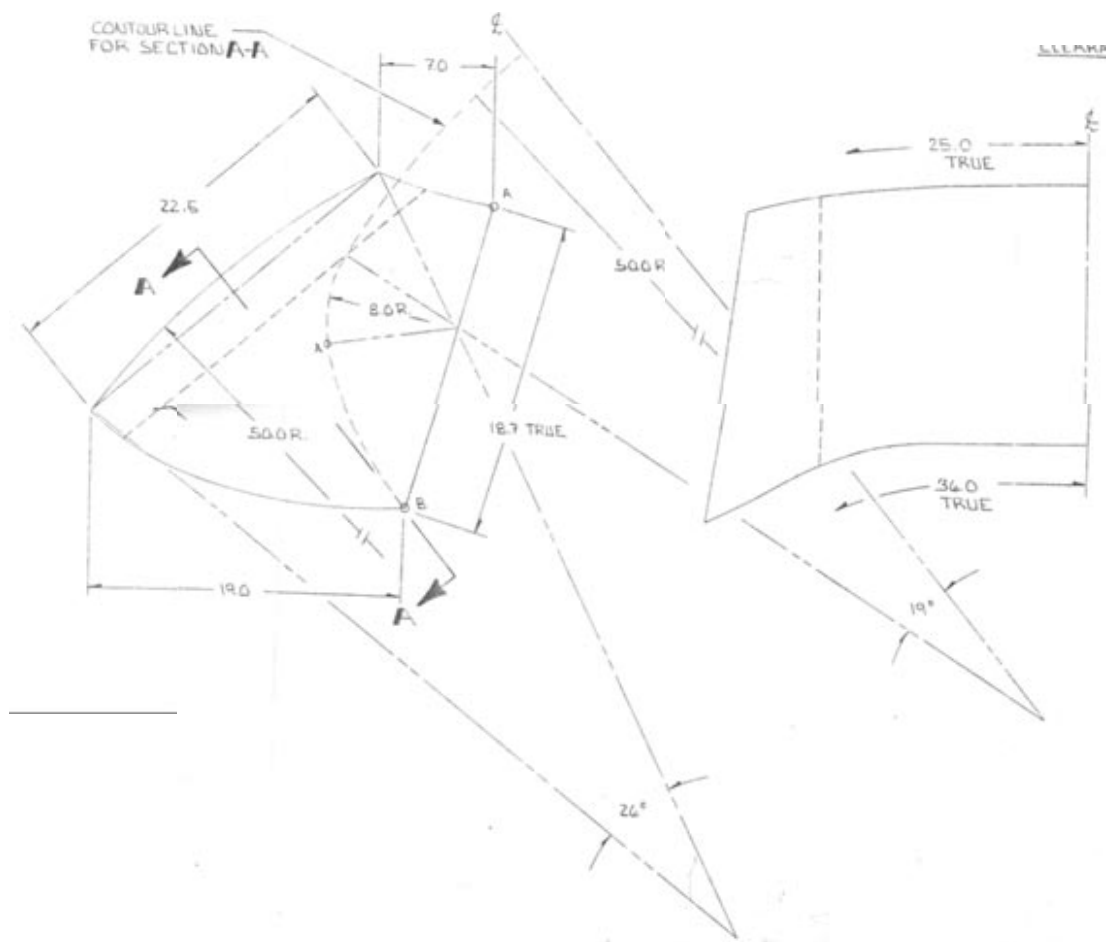


(3)

SUPPORT BRACKET



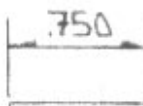
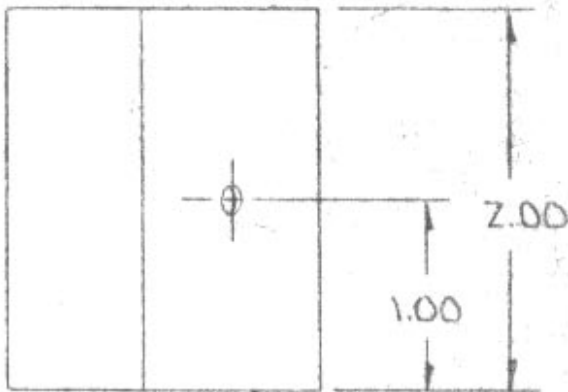
UPPER EDGE NOTCH
DETAIL FOR SCREW
CLEARANCES



6. QUALITY OF FASTENERS VARIES WITH AIRCRAFT MODEL
 5. FORM WINDSHIELD CONTOUR PER AIRCRAFT WINDSHIELD CO. PROCESS SPEC. 1
 4. WINDSHIELD CONTOUR PER WAYNE AIRFRAME, INC; MOLD AW 2051
 3. OPTICAL QUALITY PER GENERAL AIRCRAFT STANDARDS.
 2. MATL: AS-CAST ACRYLIC, ROHM & HAAS PLEX G OR EQUIV. .250 INCHES THICK, PROPERTIES PER MIL-P 5425. CLEAR OR TINTED, LIGHT TRANSMISSION 70% MIN.
 1. WINDSHIELD DIMENSIONS ARE FOR REFERENCE ONLY
- NOTES:

(-5)

TRIM PLATE



.025 THK STOCK



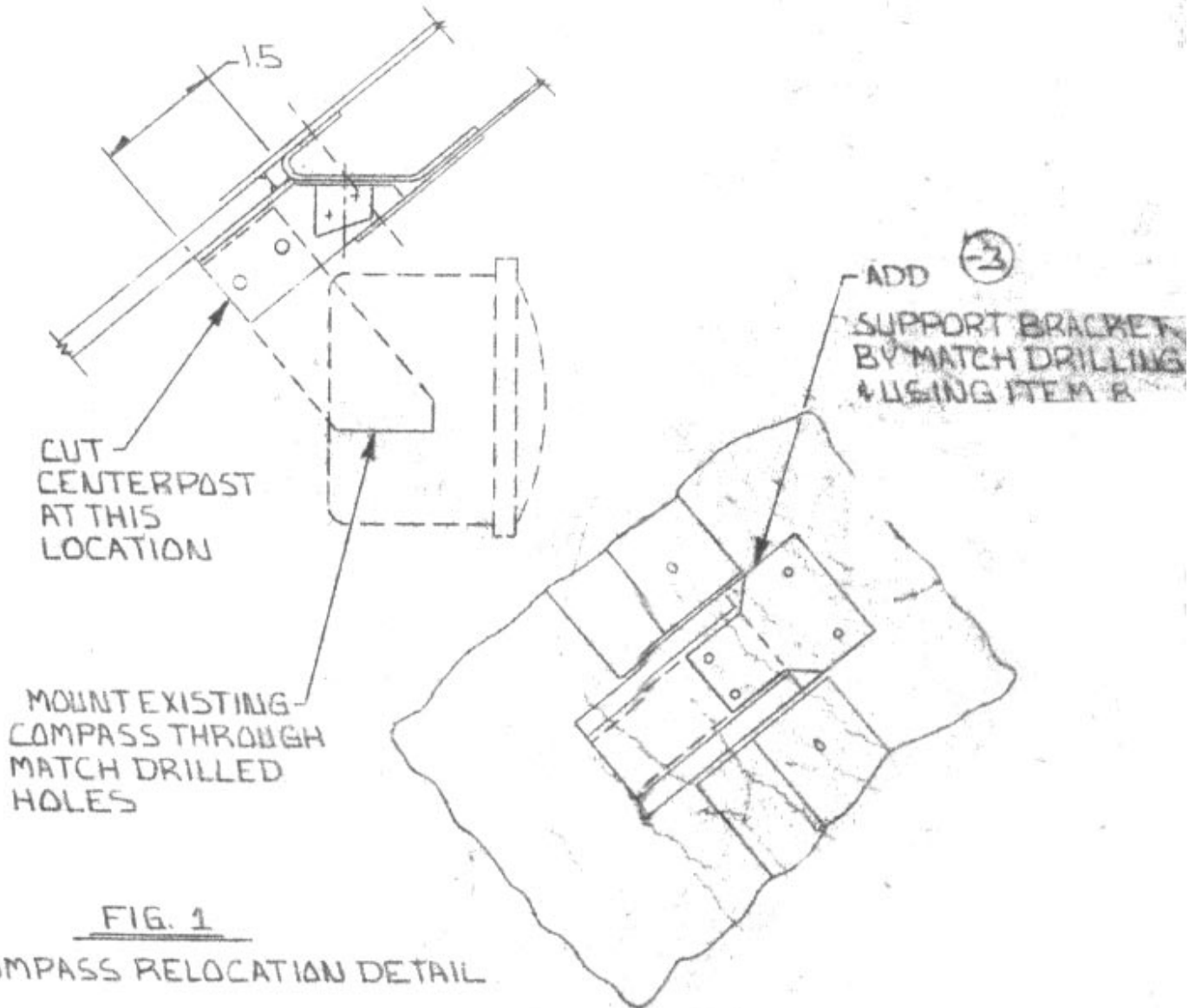


FIG. 1
COMPASS RELOCATION DETAIL

				9			
			4	8	#4-1/4	SELF TAPPING SCREW	
			11	7	NAS 220-8R12	SCREW	
			33	6	AN 364-B32	NUT, SELF LOCKING	
			22	5	NAS 220-8RB	SCREW	
				4			
				3	75121-5	TRIM PLATE	
				2	75121-3	SUPPORT BRACKET	
				1	75121-1	WINDSHIELD	
			-1	ITEM NO	PART NO	DESCRIPTION	
				LIST OF MATERIAL			
			UNLESS OTHERWISE SPECIFIED DIMENSIONS ARE IN INCHES TOLERANCES			GEJE'S 1550 SAN CARLOS BRIDGE, CALIF. TEL 714/237-8000	
			FRACTIONS DECIMALS ANGLES			WINDSHIELD-SINGLE PIECE	
			± 1/32 .XX ± .03 ± 0°-30°			PIPER SINGLE & TWIN COMANCHE'S	
			DO NOT SCALE DRAWING			SIZE	DRAWING NO.
			DRILLED HOLE TOLERANCES			D	75121
			0.00 TO .1285	+ .002 - .001		SCALE 1/5	REV. B
			.136 TO .228	+ .003 - .001		WT. 14 LBS.	
			.234 TO 1/2	+ .004 - .001			
			33/64 TO 3/4	+ .005 - .001			
			49/64 TO 1.0	+ .007 - .001			
			1-1/64 TO 2.0	+ .010 - .001			

	PA-39
PIPER	PA-30
AIRCRAFT	PA-24-400
MODELS	PA-24-260
	PA-24-250
	PA-24
WE XTASSY	USED ON
APPLICATION	

